

Reg. No.

--	--	--	--	--	--	--	--	--	--

**SIDDHARTH INSTITUTE OF ENGINEERING AND TECHNOLOGY : : PUTTUR
(AUTONOMOUS)****II B.Tech. II Semester (R16) Regular and Supplementary Examinations May 2019
BUILDING PLANNING AND DRAWING****(Civil Engineering)**

Time: 3 hrs

Max.Marks:60

- Note : 1. Question Paper consists of two parts (Part-A and Par- B)
2. In Part-A, Each question carries ten marks.
3. Answer ALL the questions in Part-A and Part-B

PART – A**30 Marks****Unit - I**

- 1 a. What are the principles underlying building bye – laws? 5M
b. How buildings are classified according to bye – laws? 5M
- OR
- 2 List out the various principles of planning of buildings and explain clearly about any two principles. 10M

Unit - II

- 3 What are the functions of the following rooms in a residential building?
(i) Living room (ii) Kitchen (iii) Veranda (iv) Office room 10M
- OR
- 4 a. What are the principles of planning of a school building? 5M
b. What are the factors to be considered in the design of a bank building? 5M

Unit - III

- 5 Write short notes on the following components of building automation system.
(i) Security (ii) Fire – fighting (iii) Communication 10M
- OR
6. Write short notes on the following.
(i) Structural safety (ii) Fire safety (iii) Constructional safety. 10M

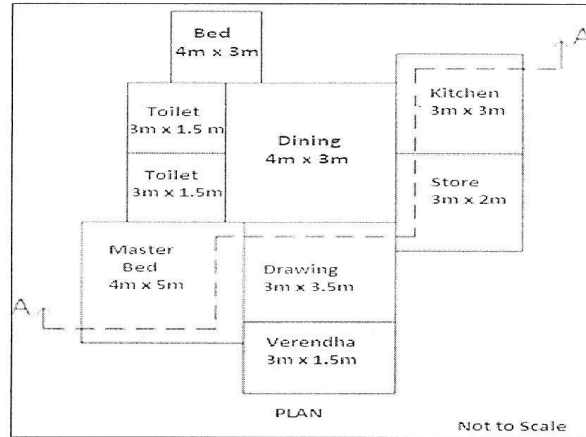
PART – B**30 Marks****Unit - IV**

7. a. Draw the sign conventions for the following. 5M
(i) Brick (ii) Rubble stone (iii) light weight concrete.
b. What are the differences between stone masonry and brick masonry? 5M
- OR
8. a. What are the guide lines to be kept in mind while deciding the location of doors in a building? 4M
b. Compare king post truss and queen post truss. 6M

P.T.O.

Unit - V

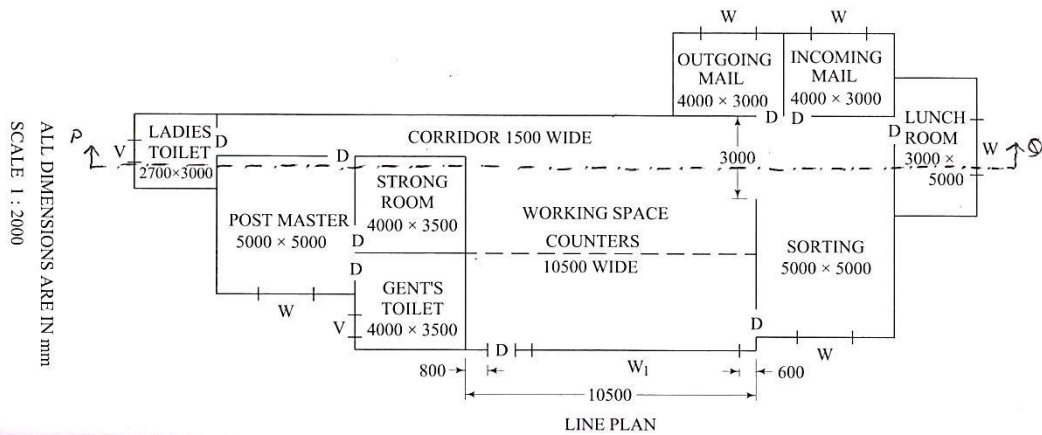
9. The line diagram for a plan of a residential building is shown below. Draw to a suitable scale the plan and section along AA. Provide standard dimensions for doors, windows and ventilators.



20M

OR

10. The line diagram of the plan of a post office building is shown below. Draw to a suitable scale the plan and section along PQ. Provide standard dimensions for doors, windows and ventilators. Assume any other suitable data.



20M

*****END*****